

## FLOOD FAMILY

### LL FLOOD WASH

Input:  
 Connection:  
 Net weight:  
 Dimensions LxWxH:  
 IP:  
 Ambient temp. (Ta):  
 Cooling:  
 Finish:



DMX 512 in/out with XLR 5PIN  
 100-260 VAC, 50-60 Hz in/out PowerCon  
 6kg/ 11 kg/  
 600/1200mmx120mmx80mm without bracket  
 IP20  
 max. 40° C  
 conventional  
 powder painted aluminium RAL 9006

Code	Product name	Length	Optic	Lamps	Price
LL44 090	LL FLOOD WASH RGBAW 600	600	25°	66 x P4	1 790
LL44 100	LL FLOOD WASH RGBAW 1200	1200	25°	132 x P4	2490

### LL FLOOD WASH IP65

Input:  
 Connection:  
 Net weight:  
 Dimensions LxWxH:  
 IP:  
 Ambient temp. (Ta):  
 Cooling:  
 Finish:



DMX 512 In 1m cable  
 100-260 VAC, 50-60 Hz 1m cable  
 11kg /6kg / 3kg  
 1230/630/230mmx130mmx108mm without bracket  
 IP65  
 max. 40° C  
 conventional  
 powder painted aluminium RAL 9006

Code	Product name	Length	Optic	Lamps	Price
LL43 080	LL FLOOD WASH RGBAW 200 IP65 *	200	25°	22 x P4	1 190
LL43 090	LL FLOOD WASH RGBAW 600 IP65*	600	25°	66 x P4	1990

### LL FLOOD SPOT

Connection:  
 Net weight:  
 Dimensions LxWxH:  
 IP:  
 Ambient temp. (Ta):  
 Cooling:  
 Finish:



100-260V AC 50-60Hz In 1m cable  
 3,0 kg  
 215x150 without bracket  
 IP65  
 max. 40° C  
 conventional  
 powder painted aluminium RAL 9006

Code	Product name	Optic	Lamps	Price
LL44 700	LL FLOOD SPOT RGB IP65	25°	16 x RGB 3x1W	1 190
LL44 705	LL FLOOD SPOT RGB IP20	25°	16 x RGB 3x1W	1090

## A3 FAMILY

### LL A3 SPOT 07

Connection:  
 Net weight:  
 Dimensions LxWxH:  
 IP:  
 Ambient temp. (Ta):  
 Cooling:  
 Finish:



220-240V 50/60Hz AC 1,5m cable  
 On request US version: 100-120V  
 1,9 kg  
 115x125mm without bracket  
 IP43 , IP65  
 max. 40° C  
 conventional  
 powder painted aluminium black

Code	Product name	Optic	Lamps	Price
LL33 480	LL A3 SPOT 07 W IP43	25°	7x Acriche W	250
LL33 490	LL A3 SPOT 07 N IP43	25°	7x Acriche N	250
LL33 485	LL A3 SPOT 07 W IP65	25°	7x Acriche W	280
LL36 107	LL STAGE WASH AW 600 VO, 25°	25°	7x Acriche N	280

Цены с НДС. Приведены в условных единицах.

Оплата производится в гривнах по курсу Нацбанка. 1y.e = 1 €

## LL A3 SPOT 07 IN GROUND

Connection:

Net weight:

Dimensions LxWxH:

IP:

Ambient temp. (Ta):

Cooling:

Finish:



220-240V 50/60Hz AC 1,5m cable

On request US version: 100-120V

2,0 kg

115 x 160 mm without bracket

IP67

max. 40° C

conventional

powder painted aluminium black

### IP43

Code	Product name	Optic	Lamps	Price
LL32 480	LL A3 SPOT 07 IN GROUND W	25°	7x Acriche W	290
LL32 490	LL A3 SPOT 07 IN GROUND N	25°	7x Acriche N	290
LL41 455	LL BOX SPOT IN GROUND			20

## LL A3 SPOT 07 RECESSED

Connection:

Net weight:

IP:

Ambient temp. (Ta):

Cooling:

Finish:



230V AC 1,5m cable

0,35 kg

indoor: IP43, outdoor:IP65

max. 40° C

conventional

powder painted aluminium black

### IP43

Code	Product name	Optic	Lamps	Price
LL31 480	LL A3 SPOT 07 RECESSED W IP43	25°	7x Acriche W	250
LL31 490	LL A3 SPOT 07 RECESSED N IP43	25°	7x Acriche N	250
LL31 485	LL A3 SPOT 07 RECESSED W IP65	25°	7x Acriche W	250
LL31 495	LL A3 SPOT 07 RECESSED N IP65	25°	7x Acriche N	250

## LL A3 BIG POINT 01

Connection:

Net weight:

Dimensions LxWxH:

IP:

Ambient temp. (Ta):

Cooling:

Finish:



230V AC 1,5m cable

0,35 kg

60 mm x 60 mm without bracket

IP65

max. 40° C

conventional

powder painted aluminium black

### IP43

Code	Product name	Optic	Lamps	Price
LL39 520	LL A3 BIG POINT 01 BASIC W	25°	1x Acriche W	80
LL39 530	LL A3 BIG POINT 01 BASIC N	25°	1x Acriche N	80
LL30 520	LL A3 BIG POINT 01 SURFACE W (LL39 520 + LL41 400)	25°	1x Acriche W	100
LL30 530	LL A3 BIG POINT 01 SURFACE N (LL39 530 + LL41 400)	25°	1x Acriche N	100
LL31 520	LL A3 BIG POINT 01 RECESSED W (LL39 520 + LL41 410)	25°	1x Acriche W	100
LL31 530	LL A3 BIG POINT 01 RECESSED N (LL39 530 + LL41 410)	25°	1x Acriche N	100
LL32 520	LL A3 BIG POINT 01 IN GROUND W (LL39 520 + LL41 450)	25°	1x Acriche W	150
LL32 530	LL A3 BIG POINT 01 IN GROUND N (LL39 530 + LL41 450)	25°	1x Acriche N	150
LL33 520	LL A3 BIG POINT 01 BRACKET W (LL39 520 + LL41 500)	25°	1x Acriche W	110
LL33 530	LL A3 BIG POINT 01 BRACKET N (LL39 530 + LL41 500)	25°	1x Acriche N	110
LL34 520	LL A3 BIG POINT 01 SUSPENDED W (LL39 520 + LL41 500)	25°	1x Acriche W	120
LL34 530	LL A3 BIG POINT 01 SUSPENDED N (LL39 530 + LL41 500)	25°	1x Acriche N	120

Цены с НДС. Приведены в условных единицах.

Оплата производится в гривнах по курсу Нацбанка. 1y.e = 1 €

## ACCESSORIES

Code	Product name	Price
LL41 400	LL HOLDER A3 BIG POINT SURFACE	20
LL41 410	LL HOLDER A3 BIG POINT RECESSED	20
LL41 450	LL BOX A3 BIG POINT IN GROUND	70
LL41 500	LL BRACKET A3 BIG POINT	30
LL41 505	LL HOLDER A3 BIG POINT SUSPENDED	40

### LL A3 LINE

Connection:	230V AC 1,5m cable
Net weight:	0,35 kg
Dimensions LxWxH:	
IP:	IP43, IP65
Ambient temp. (Ta):	max. 40° C
Cooling:	conventional
Finish:	powder painted aluminium black



Code	Product name	Length	Optic	Lamps	Price
LL33 104	LL A3 LINE 07 N 300 IP43	300 mm	25°	7 x Acriche N	250
LL33 105	LL A3 LINE 07 W 300 IP43	300 mm	25°	7 x Acriche W	250
LL33 108	LL A3 LINE 14 N 600 IP43	600 mm	25°	14 x Acriche N	390
LL33 109	LL A3 LINE 14 W 600 IP43	600 mm	25°	14 x Acriche W	390
LL33 114	LL A3 LINE 07 N 300 IP65	300 mm	25°	7 x Acriche N	280
LL33 115	LL A3 LINE 07 W 300 IP65	300 mm	25°	7 x Acriche W	280
LL33 118	LL A3 LINE 14 N 600 IP65	600 mm	25°	14 x Acriche N	430
LL33 119	LL A3 LINE 14 W 600 IP65	600 mm	25°	14 x Acriche W	430

## ACCESSORIES

Code	Product name	Price
LL41 101	LL BRACKET LINE 300 ADJUSTABLE	16
LL41 102	LL BRACKET LINE 600/1200 ADJUSTABLE	20
LL41 110	LL BRACKET ARC LINE ADJUSTABLE DUAL (pack 2pcs)	30
LL41 120	LL BRACKET ARC LINE ADJUSTABLE TRIPLE (pack 2pcs)	40

### ARC FAMILY

#### LL ARC SPOT 19

Input:	3 channels 24V dimming
Connection:	24V DC 5m cable with 6 pin LINE connector
Net weight:	3,0kg
Dimensions LxWxH:	215X150 without bracket
IP:	IP43, IP65
Ambient temp. (Ta):	max. 40° C
Cooling:	conventional
Finish:	powder painted aluminium RAL 9006



Code	Product name	Optic	Lamps	Price
LL33 700	LL ARC SPOT 19 RGB IP43	25°	7xR+6xG+6xB Z	390
LL33 705	LL ARC SPOT 19 RGB IP65	25°	7xR+6xG+6xB Z	440

#### LL ARC SPOT 19 IN GROUND

Input:	3 channels 24V dimming
Connection:	24V DC 5m cable with 6 pin LINE connector
Net weight:	2,5kg
Dimensions LxWxH:	215X150 without bracket
IP:	IP67
Ambient temp. (Ta):	max. 40° C
Cooling:	conventional
Finish:	powder painted aluminium RAL 9006



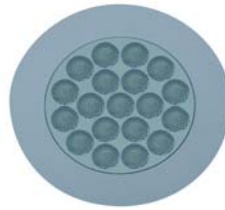
Code	Product name	Optic	Lamps	Price
LL32 700	LL ARC SPOT 19 IN GROUND RGB	25°	7xR+6xG+6xB Z	440
LL41 455	LL BOX SPOT IN GROUND			20

Цены с НДС. Приведены в условных единицах.

Оплата производится в гривнах по курсу Нацбанка. 1y.e = 1 €

### LL ARC SPOT 19 RECESSED

Input:  
 Connection:  
 Net weight:  
 Dimensions LxWxH:  
 IP:  
 Ambient temp. (Ta):  
 Cooling:  
 Finish:



3 channels 24V dimming  
 24V DC 5m cable with 6 pin LINE connector  
 2,0 kg  
 65-85 x 150 mm  
 IP20  
 max. 40° C  
 conventional  
 powder painted aluminium RAL 9006

Code	Product name	Optic	Lamps	Price
LL31 700	LL ARC SPOT 19 RECESSED RGB	25°	7xR+6xG+6xB Z	390

### LL ARC DOWNLIGHT 18

Input:  
 Connection:  
 Net weight:  
 Dimensions LxWxH:  
 IP:  
 Ambient temp. (Ta):  
 Cooling:  
 Finish:



1 channel 24V dimming  
 24V DC 5m cable with 6 pin LINE connector  
 1,0 kg  
 65-85 x 150 mm  
 IP20  
 max. 40° C  
 conventional  
 powder painted aluminium RAL 9006

Code	Product name	Optic	Lamps	Price
LL31 710	LL ARC DOWNLIGHT 18 W	40-65°	18 xW Z5	250
LL31 720	LL ARC DOWNLIGHT 18 WW	40-65°	18 xWW Z5	250

### LL ARC POINT OneChip RGB

Input:  
 Connection:  
 Net weight:  
 Dimensions LxWxH:  
 IP:  
 Ambient temp. (Ta):  
 Cooling:  
 Finish:

3 channels 24V dimming  
 1,5m cable with 6pin LINE connector to Spliter!!!  
 0,2 kg  
 40 mm x 49 mm without bracket  
 IP43 or IP65 on request  
 max. 40° C  
 conventional  
 powder painted aluminium RAL 9006



LL41 200

LL41 230

LL41 300

LL41 205

LL39 500	LL LED POINT OneChip RGB 3x0,35A	25°		1x (3x1W) P5	70
LL30 500	LL ARC POINT SURFACE OneChip RGB (LL39 500 + LL41 200)	25°		1x (3x1W) P5	90
LL31 500	LL ARC POINT RECESSED OneChip RGB (LL39 500 + LL41 230)	25°		1x (3x1W) P5	90
LL32 500	LL ARC POINT IN GROUND OneChip RGB (LL39 500 + LL41 250)	25°		1x (3x1W) P5	140
LL33 500	LL ARC POINT BRACKET OneChip RGB (LL39 500 + LL41 300)	25°		1x (3x1W) P5	100
LL34 500	LL ARC POINT SUSPENDED OneChip RGB	25°		1x (3x1W) P5	110

Цены с НДС. Приведены в условных единицах.

Оплата производится в гривнах по курсу Нацбанка. 1y.e = 1 €

**Accessories**

Code	Product name	Price
LL41 200	LL HOLDER ARC POINT SURFACE	20
LL41 205	LL HOLDER ARC POINT SUSPENDED	40
LL41 230	LL HOLDER ARC POINT RECESSED	20
LL41 250	LL BOX ARC POINT IN GROUND	70
LL41 300	LL BRACKET ARC POINT	30

**Splitter**

Code	Product name	Price
LL41 420	LL ARC SPLITTER RGB 6xOUT	40

**LL ARC POINT OneChip RGB use only with LL ARC SPLITTER RGB!!!**

**LL ARC POINT OneColour**

Input:	3 channels 24V dimming
Connection:	1,5m cable with 6 pin LINE connector to Spliter!!!
Net weight:	0,2 kg
Dimensions LxWxH:	40 mm x 49 mm without bracket
IP:	IP43 or IP65 on request
Ambient temp. (Ta):	max. 40° C
Cooling:	conventional
Finish:	powder painted aluminium RAL 9006



LL39 510x**	LL ARC POINT BASIC OneColour 1x0,35A	25°		1x R/G/ B/A/W/N P4	70
LL30 510x**	LL ARC POINT SURFACE OneColour(LL30 510x + LL41 200)	25°		1x R/G/ B/A/W/N P4	90
LL31 510x**	LL ARC POINT RECESSED OneColour (LL30 510x + LL41 230)	25°		1x R/G/ B/A/W/N P4	90
LL32 510x**	LL ARC POINT IN GROUND OneColour (LL30 510x + LL41 250)	25°		1x R/G/ B/A/W/N P4	140
LL33 510x**	LL ARC POINT BRACKET OneColour (LL30 510x + LL41 300)	25°		1x R/G/ B/A/W/N P4	100
LL34 510x**	LL ARC POINT SUSPENDED OneColour	25°		1x R/G/ B/A/W/N P4	110

**Accessories**

Code	Product name	Price
LL41 200	LL HOLDER ARC POINT SURFACE	20
LL41 205	LL HOLDER ARC POINT SUSPENDED	40
LL41 230	LL HOLDER ARC POINT RECESSED	20
LL41 250	LL BOX ARC POINT IN GROUND	70
LL41 300	LL BRACKET ARC POINT	30

**Splitter**

Code	Product name	Price
LL41 430	LL ARC SPLITTER G,B,W,N 6xOUT	40
LL41 440	LL ARC SPLITTER R,A 6xOUT	40

**LL ARC POINT OneColour G/B/W/N use only with LL ARC SPLITTER G,B,W,N!!!, LL ARC POINT OneColour R/A use only with LL ARC SPLITTER R,A!!!**

**Note: \*\* x = 1(Red), 2(Green), 3(Blue), 4(Amber), 5(White-6300°K), 6(Neutral White-3000°K)**

Цены с НДС. Приведены в условных единицах.

Оплата производится в гривнах по курсу Нацбанка. 1y.e = 1 €

## STAGE FAMILY

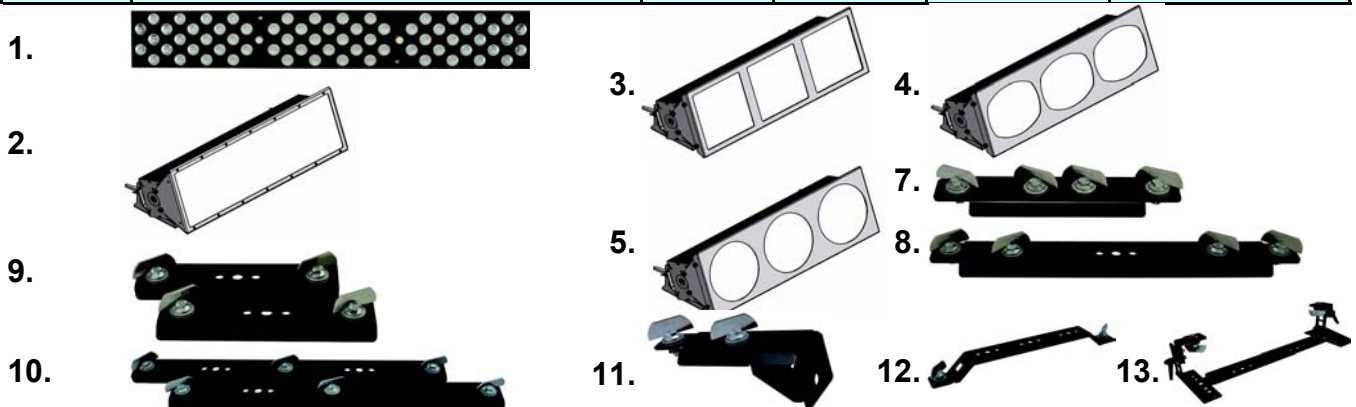
### LL STAGE WASH

Input:  
 Connection:  
 Net weight:  
 Dimensions LxWxH:  
 IP:  
 Ambient temp. (Ta):  
 Cooling:  
 Finish:



DMX 512 in/out with XLR 5PIN  
 100-260 VAC, 50-60 Hz in/out PowerCon  
 6kg  
 600mm x 120mm x 80mm without bracket  
 IP20  
 max. 40° C  
 conventional  
 powder painted aluminium black

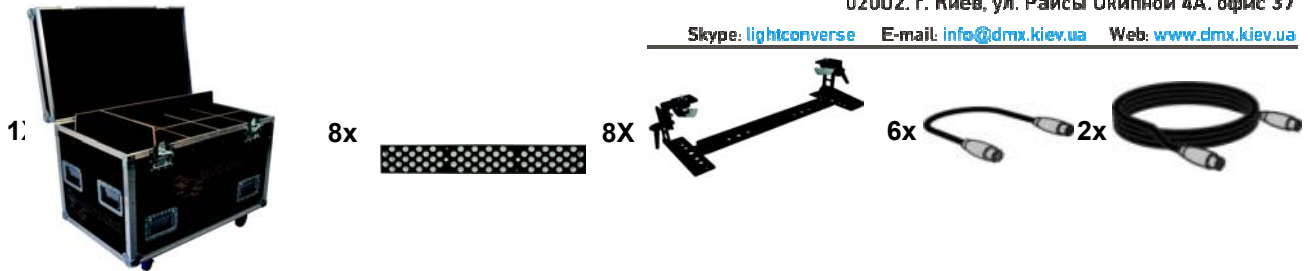
Code	Product name	Length	Optic	Lamps	Price
LL36 104	LL STAGE WASH RGBAW 600, without optic	600 mm	no	66 x P4	2 470
LL36 105	LL STAGE WASH RGBAW 600 VO, 25°	600 mm	25°	66 x P4	2680
LL36 106	LL STAGE WASH AW 600, without optic	600 mm	no	66 x P4	2470
LL36 107	LL STAGE WASH AW 600 VO, 25°	600 mm	25°	66 x P4	2680
LL36 108	LL STAGE WASH AWUV 600, without optic	600 mm	no	42xP4+24xUV	2470
LL36 109	LL STAGE WASH AWUV 600 VO, 25°	600 mm	25°	42xP4+24xUV	2680



### ACCESSORIES

code	Product name	Length	Optic	Lamps	Price
LL37 176	LL VARIO OPTIC WASH 600 10°	600 mm	10°	1	210
LL37 177	LL VARIO OPTIC WASH 600 25°	600 mm	25°	1	210
LL37 178	LL VARIO OPTIC WASH 600 40°	600 mm	40°	1	210
LL37 179	LL VARIO OPTIC WASH 600 EL (Eliptical 15°x90°)	600 mm	15°x90°	1	210
LL37 175	LL VARIO OPTIC WASH 600 AS (Asymetrical)	600 mm	AS	1	340
LL37 300	LL TUBUS WASH 600 FULL	600 mm		2	180
LL37 305	LL FRAME WASH 600 SQ3	600 mm		3	60
LL37 310	LL FRAME WASH 600 R3	600 mm		4	60
LL37 315	LL FRAME WASH 600 O3	600 mm		5	60
LL36 400	LL FLIGHT CASE WASH 600*			6	1100
LL36 600	LL BRACKET STAGE WASH 600 SERIAL 200			7	80
LL36 610	LL BRACKET STAGE WASH 600 SERIAL 200 EXTENSION			8	80
LL36 620	LL BRACKET STAGE WASH 600 PARALLEL DUAL (2pcs)			9	80

Цены с НДС. Приведены в условных единицах.  
 Оплата производится в гривнах по курсу Нацбанка. 1y.e = 1 €


**KIT** by the order define the type of LL STAGE WASH VO

Code	Product name	Price
LL36 500	LL STAGE WASH RENTAL KIT: 1 x LL FLIGHT CASE WASH 600 8 x LL STAGE WASH RGBAW 600 VO, 25° or LL STAGE WASH AW 600 VO, 25° or LL STAGE WASH AWUV 600 VO, 25° or combination of LL STAGE WASH RGBAW/AW/AWUV 600 VO, 25° 8 x LL BRACKET STAGE WASH 600 ADJUSTABLE 6 x 1m connection cable 2 x 3m power supply cable	22500

### STAGE FAMILY

#### LL STAGE SPOT VO

 Input:  
 Connection:  
 Net weight:  
 Dimensions LxWxH:  
 IP:  
 Ambient temp. (Ta):  
 Cooling:  
 Finish:

 DMX 512 in/out with XLR 5PIN  
 100-260 VAC, 50-60 Hz In/out PowerCon  
 3,2kg  
 215mm x 163mm x 170mm without bracket  
 IP20  
 max. 40° C  
 conventional  
 powder painted aluminium black

Code	Product name	Optic	Lamps	Price
LL36 202	LL STAGE SPOT 16 RGBA VO, 25°	25°	16xRGBA 4x1,5'	1 630
LL36 203	LL STAGE SPOT 16 RGBA, without optic	no	16xRGBA 4x1,5'	1540

#### Accessories

Code	Product name	Optic	Price
LL37 190	LL VARIO OPTIC SPOT 16 10°	10°	90
LL37 191	LL VARIO OPTIC SPOT 16 25°	25°	90
LL37 192	LL VARIO OPTIC SPOT 16 40°	40°	90
LL37 193	LL VARIO OPTIC SPOT 16 EL (Eliptical 15°x90°)	15°x90°	90

#### LL STAGE SPOT VO

 Input:  
 Connection:  
 Net weight:  
 Dimensions LxWxH:  
 IP:  
 Ambient temp. (Ta):  
 Cooling:  
 Finish:

 DMX 512 in/out with XLR 5PIN  
 100-260 VAC, 50-60 Hz In/out PowerCon  
 3,2kg  
 215mm x 163mm x 170mm without bracket  
 IP65  
 max. 40° C  
 conventional  
 powder painted aluminium black

Code	Product name	Optic	Lamps	Price
LL35 202	LL STAGE SPOT 16 RGBA VO, 25° IP65	25°	16xRGBA 4x1,5'	1 680

Цены с НДС. Приведены в условных единицах.

Оплата производится в гривнах по курсу Нацбанка. 1y.e = 1 €

## LL PRO WASH IP65

Input:  
 Connection:  
 Net weight:  
 Dimensions LxWxH:  
 IP:  
 Ambient temp. (Ta):  
 Cooling:  
 Finish:



DMX 512 In 1m cable  
 100-260 VAC, 50-60 Hz 1m cable  
 6kg/ 3kg  
 630/230mm x 130mm x 108mm without bracket  
 IP65  
 max. 40° C  
 conventional  
 powder painted aluminium black

Code	Product name	Length	Optic	Lamps	Price
LL35 070	LL PRO WASH RGBAW 200 FIX 25° ** IP	200 mm	25°	22 x P4*	1680
LL35 090	LL PRO WASH RGBAW 600 FIX 25° ** IP	600 mm	25°	66 x P4*	2780
LL35 100	LL PRO WASH AW 200 FIX 25° ** IP65	200 mm	25°	22 x P4*	1680
LL35 120	LL PRO WASH AW 600 FIX 25° ** IP65	600 mm	25°	66 x P4*	2780

## LL PRO WASH VO

Input:  
 Connection:  
 Net weight:  
 Dimensions LxWxH:  
 IP:  
 Ambient temp. (Ta):  
 Cooling:  
 Finish:



DMX 512 in/out with XLR 5PIN  
 100-260 VAC, 50-60 Hz in/out PowerCon  
 11 kg / 6kg  
 1200/600/200mmx120mmx80mm without bracket  
 IP20 / IP65  
 max. 40° C  
 conventional  
 powder painted aluminium black

Code	Product name	Length	Optic	Lamps	Price
LL37 104	LL PRO WASH RGBAW 600, without optic*	600 mm	no	66 x P4*	2310
LL37 105	LL PRO WASH RGBAW 600 VO, 25°*	600 mm	25°	66 x P4*	2520
LL37 106	LL PRO WASH AW 600, without optic	600 mm	no	66 x P4*	2310
LL37 107	LL PRO WASH AW 600 VO, 25°	600 mm	25°	66 x P4*	2520
LL37 109	LL PRO WASH RGBAW 1200, without optic*	1200 mm	no	132 x P4*	3060
LL37 110	LL PRO WASH RGBAW 1200 VO, 25°*	1200 mm	25°	132 x P4*	3480
LL37 114	LL PRO WASH AW 1200, without optic	1200 mm	no	132 x P4*	3060
LL37 115	LL PRO WASH AW 1200 VO, 25°	1200 mm	25°	132 x P4*	3480

## LL LED LINE 50 Z-POWER OneChip RGB DC24V

Input:  
 Connection:  
 Net weight:  
 Dimensions LxWxH:  
 IP:  
 Ambient temp. (Ta):  
 Cooling:  
 Finish:



3 channels 24V dimming  
 24V DC 5m cable with 6 pin LINE connector  
 2kg/1,5kg/1kg : 1200mm/600mm/300mm  
 1200/600/300mmx51mmx47mm without bracket  
 indoor: IP43, outdoor:IP65  
 max. 40° C  
 conventional  
 powder painted aluminium RAL 9006

Code	Product name	Length	Optic	Lamps	Price
LL39 100	LL LED LINE50 OneChip 24RGB 3x1,4A	1200 mm	25°	24x RGB 3x1W P5	690
LL39 104	LL LED LINE 50 OneChip 12 RGB 3x0,7A	600 mm	25°	12x RGB 3x1W P5	390
LL39 108	LL LED LINE 50 OneChip 6 RGB 3x0,35A	300 mm	25°	6x RGB 3x1W P5	250

Цены с НДС. Приведены в условных единицах.

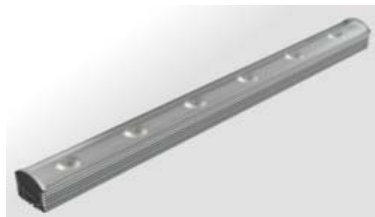
Оплата производится в гривнах по курсу Нацбанка. 1y.e = 1 €

**OUTDOOR: IP65**

LL38 100	LL LED LINE 50 OneChip 24 RGB 3x1,4A IP65	1200 mm	25°	24x RGB 3x1W P5	750
LL38 104	LL LED LINE 50 OneChip 12 RGB 3x0,7A IP65	600 mm	25°	12x RGB 3x1W P5	430
LL38 108	LL LED LINE 50 OneChip 6 RGB 3x0,35A IP65	300 mm	25°	6x RGB 3x1W P5	280

**LL LED LINE 100 Z-POWER OneChip RGB DC24V**

Input:  
 Connection:  
 Net weight:  
 Dimensions LxWxH:  
 IP:  
 Ambient temp. (Ta):  
 Cooling:  
 Finish:



3 channels 24V dimming  
 24V DC 5m cable with 6 pin LINE connector  
 2kg/1,5kg : 1200mm/600mm  
 1200/600mm x 51mm x 47mm without bracket  
 indoor: IP43, outdoor:IP65  
 max. 40° C  
 conventional  
 powder painted aluminium RAL 9006

Code	Product name	Length	Optic	Lamps	Price
------	--------------	--------	-------	-------	-------

**INDOOR: IP43**

LL39 200	LL LED LINE 100 OneChip 12 RGB 3x0,7A	1200 mm	25°	12x RGB 3x1W P5	430
LL39 204	LL LED LINE 100 OneChip 6 RGB 3x0,35A	600 mm	25°	6x RGB 3x1W P5	290

**OUTDOOR: IP65**

LL38 200	LL LED LINE 100 OneChip 12 RGB 3x0,7A IP65	1200 mm	25°	12x RGB 3x1W P5	470
LL38 204	LL LED LINE 100 OneChip 6 RGB 3x0,35A IP65	600 mm	25°	6x RGB 3x1W P5	320

**LL LED LINE 100 Z-POWER SoloChip RGB DC24V**

Input:  
 Connection:  
 Net weight:  
 Dimensions LxWxH:  
 IP:  
 Ambient temp. (Ta):  
 Cooling:  
 Finish:



3 channels 24V dimming  
 24V DC 5m cable with 6 pin LINE connector  
 2kg/1,5kg : 1200mm/600mm  
 1200/600mm x 51mm x 47mm without bracket  
 indoor: IP43, outdoor:IP65  
 max. 40° C  
 conventional  
 powder painted aluminium RAL 9006

Code	Product name	Length	Optic	Lamps	Price
------	--------------	--------	-------	-------	-------

**INDOOR: IP43**

LL39 220	LL LED LINE 100 SoloChip 12 RGB 3x0,7A	1200 mm	25°	12xR+12xG+1 2xB P4	540
LL39 224	LL LED LINE 100 SoloChip 6 RGB 3x0,35A	600 mm	25°	6xR+6xG+6xB P4	320

**OUTDOOR: IP65**

LL38 220	LL LED LINE 100 SoloChip 12 RGB 3x0,7A IP65	1200 mm	25°	12xR+12xG+1 2xB P4	590
LL38 224	LL LED LINE 100 SoloChip 6 RGB 3x0,35A IP65	600 mm	25°	6xR+6xG+6xB P4	350

Цены с НДС. Приведены в условных единицах.

Оплата производится в гривнах по курсу Нацбанка. 1y.e = 1 €

**LL LED LINE 100 Z-POWER SoloChip AWB DC24V**

Input:  
 Connection:  
 Net weight:  
 Dimensions LxWxH:  
 IP:  
 Ambient temp. (Ta):  
 Cooling:  
 Finish:

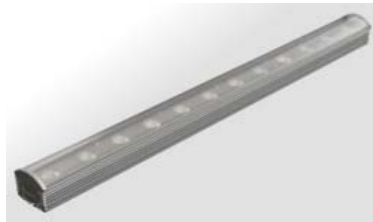


3 channels 24V dimming  
 24V DC 5m cable with 6 pin LINE connector  
 2kg/1,5kg : 1200mm/600mm  
 1200/600mm x 51mm x 47mm without bracket  
 indoor: IP43, outdoor:IP65  
 max. 40° C  
 conventional  
 powder painted aluminium RAL 9006

Code	Product name	Length	Optic	Lamps	Price
LL39 240	LL LED LINE 100 SoloChip 12 AWB 3x0,7A IP43	1200 mm	25°	12xR+12xG+1 2xB P4	540
LL39 244	LL LED LINE 100 SoloChip 6 AWB 3x0,35A IP43	600 mm	25°	6xR+6xG+6xB P4	320
LL38 240	LL LED LINE 100 SoloChip 12 AWB 3x0,7A IP65	1200 mm	25°	12xR+12xG+1 2xB P4	590
LL38 244	LL LED LINE 100 SoloChip 6 AWB 3x0,35A IP65	600 mm	25°	6xR+6xG+6xB P4	350

**LL LED LINE 50 Z-POWER OneColour R/G/B/A/W/N DC24V**

Input:  
 Connection:  
 Net weight:  
 Dimensions LxWxH:  
 IP:  
 Ambient temp. (Ta):  
 Cooling:  
 Finish:



1 channel 24V dimming  
 24V DC 5m cable with 6 pin LINE connector  
 2kg/1,5kg/1kg : 1200mm/600mm/300mm  
 1200/600/300mmx51mmx47mm without bracket  
 indoor: IP43, outdoor:IP65  
 max. 40° C  
 conventional  
 powder painted aluminium RAL 9006

Code	Product name	Length	Optic	Lamps	Price
LL39 300 x	LL LED LINE 50 OneColour 24.. 1x1,4A IP43	1200 mm	25°	24x R/G/B/ A/W/N P4	450
LL39 310 x	LL LED LINE 50 OneColour 12.. 1x0,7A IP43	600 mm	25°	12x R/G/B/ A/W/N P4	230
LL39 315 x	LL LED LINE 50 OneColour 6.. 1x0,35A IP43	300 mm	25°	6x R/G/B/ A/W/N P4	140
LL38 300 x	LL LED LINE 50 OneColour 24.. 1x1,4A IP65	1200 mm	25°	24x R/G/B/ A/W/N P4	490
LL38 310 x	LL LED LINE 50 OneColour 12.. 1x0,7A IP65	600 mm	25°	12x R/G/B/ A/W/N P4	260
LL38 315 x	LL LED LINE 50 OneColour 6.. 1x0,35A IP65	300 mm	25°	6x R/G/B/ A/W/N P4	160

**LL LED LINE 100 Z-POWER OneColour R/G/B/A/W/N DC24V**

Input:  
 Connection:  
 Net weight:  
 Dimensions LxWxH:  
 IP:  
 Ambient temp. (Ta):  
 Cooling:  
 Finish:



1 channel 24V dimming  
 24V DC 5m cable with 6 pin LINE connector  
 2kg/1,5kg : 1200mm/600mm  
 1200/600mmx51mmx47mm without bracket  
 indoor: IP43, outdoor:IP65  
 max. 40° C  
 conventional  
 powder painted aluminium RAL 9006

Code	Product name	Length	Optic	Lamps	Price
LL39 320 x	LL LED LINE 100 OneColour 12.. 1x0,7A IP43	1200 mm	25°	12x R/G/B/ A/W/N P4	250
LL39 330 x	LL LED LINE 100 OneColour 6.. 1x0,35A IP43	600 mm	25°	6x R/G/B/ A/W/N P4	160

Цены с НДС. Приведены в условных единицах.

Оплата производится в гривнах по курсу Нацбанка. 1y.e = 1 €

LL38 320 x	LL LED LINE 100 OneColour 12.. 1x0,7A IP65	1200 mm	25°	12x R/G/B/ A/W/N P4	280
LL38 330 x	LL LED LINE 100 OneColour 6.. 1x0,35A IP65	600 mm	25°	6x R/G/B/ A/W/N P4	180

### LL ARC FLEXI LINE

Input:	3/1 channels 24V dimming
Connection:	24V DC PWM
Net weight:	1kg
Dimensions LxWxH:	5000mm x 13mmx 5mm without bracket
IP:	IP43 or IP65 on request
Ambient temp. (Ta):	max. 40° C
Cooling:	conventional



Code	Product name	Length	Optic	Lamps	Price
------	--------------	--------	-------	-------	-------

### INDOOR: IP43

LL40 100	LL ARC FLEXI LINE RGB	5000mm	120°	300x RGB TOP LED*	450
LL40 110	LL ARC FLEXI LINE N	5000mm	120°	300x N TOP LED*	450
LL40 120	LL ARC FLEXI LINE W	5000mm	120°	300x W TOP LED*	450

### Accessories

Code	Product name	Price
LL41 800	LL ACCESSORIES PACK FLEXI LINE (5xend cup, 15xclip)	10

### LL LED MINI LINE TOP LED RGB/RGBW/RGBAW

Input:	3/4/5 channels 24V dimming
Connection:	24V DC 5m cable with 6 pin LINE connector
Net weight:	1200/600/300mm: 1,0kg/ 0,6kg/ 0,3kg
Dimensions LxWxH:	1200/600/300mmx29mmx27mm without bracket
IP:	IP43 or IP65 on request
Ambient temp. (Ta):	max. 40° C
Cooling:	conventional
	One module 150mm



Code	Product name	Length	Optic	Lamps	Price
------	--------------	--------	-------	-------	-------

### INDOOR: IP20

LL40 200	LL LED Mini LINE 12 RGB	300mm	120°	12x RGB TOP LED*	70
LL40 210	LL LED Mini LINE 24 RGB	600mm	120°	24x RGB TOP LED*	140
LL40 220	LL LED Mini LINE 48 RGB	1200mm	120°	48x RGB TOP LED*	280
LL40 230	LL LED Mini LINE 12 RGBW	300mm	120°	12x RGB+W TOP LED*	90
LL40 240	LL LED Mini LINE 24 RGBW	600mm	120°	24x RGB+W TOP LED*	170
LL40 250	LL LED Mini LINE 48 RGBW	1200mm	120°	48x RGB+W TOP LED*	340
LL40 260	LL LED Mini LINE 12 RGBAW	300mm	120°	12x RGB+A+ W TOP LED*	100
LL40 270	LL LED Mini LINE 24 RGBAW	600mm	120°	24x RGB+A+ W TOP LED*	190
LL40 280	LL LED Mini LINE 48 RGBAW	1200mm	120°	48x RGB+A+ W TOP LED*	360

Цены с НДС. Приведены в условных единицах.

Оплата производится в гривнах по курсу Нацбанка. 1y.e = 1 €

## ACCESSORIES

code	Product name	Price
LL41 170	LL BRACKET ARC MINI LINE 300 ADJUSTABLE	16
LL41 171	LL BRACKET ARC MINI LINE 600/1200 ADJUSTABLE	20

### LL ARC MINI LINE

Input:  
 Connection:  
 Net weight:  
 Dimensions LxWxH:  
 IP:  
 Ambient temp. (Ta):  
 Cooling:



1 channel 24V dimming  
 24V DC 5m cable with 6 pin LINE connector  
 1200/600/300mm: 1,0kg/ 0,6kg/ 0,3kg  
 1200/600/300mm x 38mm without bracket  
 IP20 or IP65 on request  
 max. 40° C  
 conventional  
 One module 150mm

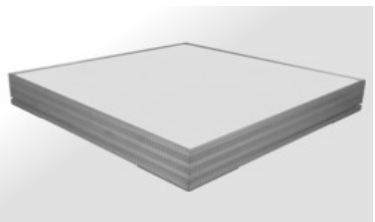
Code	Product name	Length	Optic	Lamps	Price
------	--------------	--------	-------	-------	-------

### INDOOR: IP20

LL40 205	LL ARC Mini LINE White 300	300mm	120°	24x W TOP LED	100
LL40 215	LL ARC Mini LINE White 600	600mm	120°	48x W TOP LED	170
LL40 225	LL ARC Mini LINE White 1200	1200mm	120°	96x W TOP LED	320

### LL ARC PANEL

Input:  
 Connection:  
 Net weight:  
 Dimensions LxWxH:  
 IP:  
 Ambient temp. (Ta):  
 Cooling:



3 channels, standard LL DRIVER  
 24V DC 6pin LINE connector  
 288x288 / 588x588: 3,5kg/5,5kg  
 288/588mm x 288/588mm x 80mm  
 IP20  
 max. 40° C  
 conventional

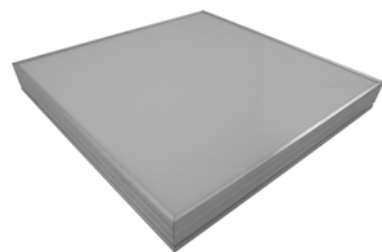
Code	Product name	Length	Lamps	Price
LL40 400	LL ARC PANEL RGB 300	300x300	36x Top LED RGB	390
LL40 440	LL ARC PANEL RGB 600	600x600	144x Top LED RGB	790

### Accessories

Code	Product name	Price
LL41 600	LL HOLDER PANEL 600 SURFACE	40

### LL ARC GRAPHIC PANEL

Input:  
 Connection:  
 Net weight:  
 Dimensions LxWxH:  
 IP:  
 Ambient temp. (Ta):  
 Cooling:



DMX512 In/Out 5pin XLR  
 100-260V AC In/Out PowerCon  
 6kg  
 588mm x 588mm x 129,5mm  
 IP20  
 max. 40° C  
 conventional

Code	Product name	Length	Lamps	Price
LL40 500	LL ARC GRAPHIC PANEL RGB	600x600	144x Top LED RGB	990

### Accessories

Code	Product name	Price
LL41 605	LL HOLDER GRAPHIC PANEL SURFACE	40

Цены с НДС. Приведены в условных единицах.

Оплата производится в гривнах по курсу Нацбанка. 1y.e = 1 €

**LL LED ACCESSORIES**

Code	Product name	Price
LL41 530	LL ARC cable (1x0,75mm <sup>2</sup> + 5x0,25mm <sup>2</sup> ) light grey or black	3
LL41 540	LL ARC cable (1x1,0mm <sup>2</sup> + 3x0,5mm <sup>2</sup> ) light grey or black	3

**LL ARC DRIVER**

 Power:  
 Connection:

 Net weight:  
 Ambient temp. (Ta):

Control:

Dimensions:


 0-16A power supply 24V or 12V DC, max. 16A  
 DMX input/output: 6 pin LINE connector  
 12x LED output: 4 group each 3 channels  
 1,0 kg  
 -10°C/+40°C except outdoor box with cooling  
 and heating module  
 Protocol: USITT DMX512  
 Control options: DMX, Auto-trigger  
 DIN installation box

Code	Product name	Price
LL42 100	LL ARC DRIVER 12	220

**LL ARC SUPPLY**

Power:

Connection:

 Net weight:  
 Ambient temp. (Ta):

Dimensions:


 IN: 100-260V AC, 50/60 Hz, OUT: 0-100%  
 DC 24V or 12V  
 screw clamps  
 2,0 kg  
 -10°C/+40°C except outdoor box with cooling  
 and heating module  
 125mm x 125mm x 110mm

Code	Product name	Price
MW 240 DIN24	POWER SUPPLY 240W/24V DIN	160
MW 240 DIN12	POWER SUPPLY 120W/12V DIN	150

Code	Product name	Price
LL05 670	Long bracket 1500 for LL PRO NEO 1500	24
LL05 672	Long bracket 1200 for LL PRO NEO 1200	18
LL05 674	Barndoor for PRO NEO 1500	60
LL05 676	Barndoor for PRO NEO 1200	50

**Glasses, filters**

Code	Product name	Price
LL05 690	Special diffusion milky white glasses for PRO NEO 1500/4tubes (LL05 400)	20
LL05 692	Special diffusion milky white glasses for PRO NEO 1200/4tubes (LL05 420)	16
LL05 T5- 8xx	Special T5 filter for coloured white T5 tube 80W - 10 colours	12
LL05 T5- 5xx	Special T5 filter for coloured white T5 tube 54W - 10 colours	10

Цены с НДС. Приведены в условных единицах.

Оплата производится в гривнах по курсу Нацбанка. 1y.e = 1 €

## Fluorescent lamps

Code	Product name	Price
LL05 81xx	xx wattage T5 Osram tube RED colour	15
LL05 82xx	xx wattage T5 Osram tube GREEN colour	15
LL05 83xx	xx wattage T5 Osram tube BLUE colour	15
LL05 84xx	xx wattage T5/830 Osram tube 3000K warm white colour	8
LL05 85xx	xx wattage T5/840 Osram tube 4000K cool white colour	8
LL05 86xx	xx wattage T5/865 Osram tube 6500K daylight white colour	8

## LED - PROFESSIONAL

### LL PRO LED WASH Z-POWER RGBAW

Input:  
 Connection:  
 Net weight:  
 Dimensions LxWxH:  
 IP:  
 Ambient temp. (Ta):  
 Cooling:  
 Finish:



DMX 512 in/out with XLR 5PIN  
 100-260 VAC, 50-60 Hz in/out PowerCon  
 6 kg /11 kg  
 600/1200mm x 120mm x 80mm without bracket  
 IP20  
 max. 40° C  
 conventional  
 powder painted aluminium black

Code	Product name	Length	Optic	Lamps	Price
LL37 090	LL PRO LED WASH 132 RGBAW	600 mm	25mm/25°	66 x P4*	2520
LL37 100	LL PRO LED WASH 132 RGBAW	1200 mm	25mm/25°	132 x P4*	3480
LL37 110	LL PRO LED WASH 132 RGBAW Vario Optic	1200 mm	25mm/25°	132 x P4*	3580
LL37 115	LL PRO LED WASH 132 AW Vario Optic	1200 mm	25mm/25°	132 x P4*	3580

### Vario Optic



Code	Product name	Length	Price
LL37 180	LL PRO LED WASH vario optics 10° **	400 mm	140
LL37 181	LL PRO LED WASH vario optics 25° **	400 mm	140
LL37 182	LL PRO LED WASH vario optics 40° **	400 mm	140
LL37 183	LL PRO LED WASH vario optics 15x90° **	400 mm	140

NEW!



Code	Product name	Length	Optic	Lamps	Price
LL37 105	LL PRO LED WASH 66 RGBAW Vario Optic	600 mm	25mm/25°	66 x P4*	2580
LL37 107	LL PRO LED WASH 66 AW Vario Optic	600 mm	25mm/25°	66 x P4*	2580

### Vario Optic

Code	Product name	Length	Price
LL37 176	LL PRO LED WASH 600mm vario optic 10°	600 mm	210
LL37 177	LL PRO LED WASH 600mm vario optic 25°	600 mm	210
LL37 178	LL PRO LED WASH 600mm vario optic 40°	600 mm	210
LL37 179	LL PRO LED WASH 600mm vario optic 15x90°	600 mm	210

Цены с НДС. Приведены в условных единицах.

Оплата производится в гривнах по курсу Нацбанка. 1y.e = 1 €

## LL PRO LED GRAPHIC PANEL RGB/RGBAW

Input:  
 Connection:  
 Net weight:  
 Dimensions LxWxH:  
 IP:  
 Ambient temp. (Ta):  
 Cooling:  
 Materials and finish:



DMX512, 3/12/27/108 + 2 channels  
 100-260V AC In/Out PowerCon  
 5 kg  
 588mmx588mmx129,5 mm  
 IP20  
 max. 40° C  
 conventional  
 Housing: powder painted aluminium in black or  
 RAL (on request)

### INDOOR: IP20

Code	Product name	Length	Optic	Lamps	Price
LL50 450	LL PRO LED GRAPHIC PANEL RGB*	600x600		144x Top LED RGB	1240
LL50 455	LL PRO LED GRAPHIC PANEL RGBAW*	600x600		432x Top LED RGBAW	1480

## LL PRO LED PANEL RGB

Input:  
 Connection:  
 Net weight:  
 Dimensions LxWxH:  
 IP:  
 Ambient temp. (Ta):  
 Cooling:  
 Materials and finish:



3 channels  
 24V DC 5m cable with XLR 6PIN  
 4 kg  
 288/588mm x 288/588mm x 80mm  
 IP20  
 max. 40° C  
 conventional  
 Housing: powder painted aluminium in black or  
 RAL (on request)

### INDOOR: IP20

Code	Product name	Length	Optic	Lamps	Price
LL50 400	LL PRO LED PANEL 36 TOP LED RGB	300x300		36x Top LED RGB	480
LL50 440	LL PRO LED PANEL 144 TOP LED RGB	600x600		144x Top LED RGB	880

### INDOOR: IP43

Code	Product name	Length	Optic	Lamps	Price
LL46 100	LL PRO LED LINE 50 OneChip 24 RGB 3x1,4A	1200 mm	35mm/25°	24x RGB 3x1W P5	1060
LL46 104	LL PRO LED LINE 50 OneChip 12 RGB 3x0,7A	600 mm	35mm/25°	12x RGB 3x1W P5	540
LL46 108	LL PRO LED LINE 50 OneChip 6 RGB 3x0,35A	300 mm	35mm/25°	6x RGB 3x1W P5	280

### OUTDOOR: IP65

Code	Product name	Length	Optic	Lamps	Price
LL45 100	LL PRO LED LINE 50 OneChip 24 RGB 3x1,4A IP65	1200 mm	35mm/25°	24x RGB 3x1W P5	1140
LL45 104	LL PRO LED LINE 50 OneChip 12 RGB 3x0,7A IP65	600 mm	35mm/25°	12x RGB 3x1W P5	600
LL45 108	LL PRO LED LINE 50 OneChip 6 RGB 3x0,35A IP65	300 mm	35mm/25°	6x RGB 3x1W P5	320

Цены с НДС. Приведены в условных единицах.  
 Оплата производится в гривнах по курсу Нацбанка. 1y.e = 1 €

**LL PRO LED LINE 100 Z-POWER OneChip RGB DC24V**

Input:  
 Connection:  
 Net weight:  
 Dimensions LxWxH:  
 IP:  
 Ambient temp. (Ta):  
 Cooling:  
 Finish:



3 channels 24V dimming  
 24V DC 5m cable with XLR 6PIN  
 2kg/1,5kg : 1200mm/600mm  
 1200/600mm x 51mm x 47mm without bracket  
 indoor: IP43, outdoor:IP65  
 max. 40° C  
 conventional  
 powder painted aluminium black

Code	Product name	Length	Optic	Lamps	Price
------	--------------	--------	-------	-------	-------

**INDOOR: IP43**

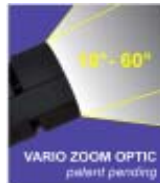
LL46 200	LL PRO LED LINE 100 OneChip 12 RGB 3x0,7A	1200 mm	25°	12x RGB 3x1W P5	580
LL46 204	LL PRO LED LINE 100 OneChip 6 RGB 3x0,35A	600 mm	25°	6x RGB 3x1W P5	300

**OUTDOOR: IP65**

LL45 200	LL PRO LED LINE 100 OneChip 12 RGB 3x0,7A IP65	1200 mm	25°	12x RGB 3x1W P5	780
LL45 204	LL PRO LED LINE 100 OneChip 6 RGB 3x0,35A IP65	600 mm	25°	6x RGB 3x1W P5	420

**LL PRO LED SPOT Z-POWER OneChip RGB/RGBA Vario Optic**

Input:  
 Connection:  
 Net weight:  
 Dimensions LxWxH:  
 IP:  
 Ambient temp. (Ta):  
 Cooling:  
 Finish:

**NEW!**


DMX512 In/Out 5pin XLR  
 100-260V AC In/Out PowerCon  
 3,2kg  
 270mm x 165mm without bracket  
 IP20  
 max. 40°C  
 Housing: powder-painted anodized aluminium in black (other colours on request) + plastic

Code	Product name	Optic	Lamps	Price
------	--------------	-------	-------	-------

LL46 620	LL PRO LED SPOT Vario Zoom 18 RGB	10° - 60°	18xRGB 3x1W P5	P.O.A.
LL46 630	LL PRO LED SPOT Vario Zoom 18 RGBA	10° - 60°	18xRGBA 4x1,5W	P.O.A.
LL37 820	Barndoor for LL PRO SPOT Vario Zoom		12x RGB 3x1W P5	P.O.A.
LL37 830	Filter frame for LL PRO SPOT Vario Zoom		12x RGB 3x1W P5	P.O.A.

**LL PRO LED POINT Z-POWER OneChip RGB MR16 DC4V**

Input:  
 Connection:  
 Net weight:  
 Dimensions LxWxH:  
 IP:  
 Ambient temp. (Ta):  
 Cooling:  
 Finish:



3 channels 24V dimming  
 24V DC 5m cable with 6 pin LINE connector  
 0,2 kg  
 max.115mmxmax.82mmx49mm without bracket  
 IP43 or IP65 on request  
 max. 40° C  
 conventional  
 powder painted aluminium black

Code	Product name	Optic	Lamps	Price
------	--------------	-------	-------	-------

**OUTDOOR: IP65**

LL46 500	LL PRO LED POINT OneChip RGB 3x0,35A	single optic	35mm/25° 1x (3x1W) P5	100
----------	--------------------------------------	--------------	-----------------------	-----

Цены с НДС. Приведены в условных единицах.

Оплата производится в гривнах по курсу Нацбанка. 1y.e = 1 €

## LL PRO LED ACCESSORIES

### Mounting accessories

Code	Product name	Price
LL05 658	Adjustable mounting bracket for LL PRO PIXEL (2pcs)	30
LL37 800	Barndoor for LL PRO LED SPOT Vario Optic	38
LL37 890	Double bracket for LL PRO LED WASH 66 - 600mm	20
LL37 900	Long bracket 1200 for LL LED WASH	30
LL37 920	Barndoor for LL LED WASH	30

### Connection accessories

Code	Product name	Price
LL43 400	Splitter 2xIN XLR 6PIN parallel DC24V/ 1xOUT DC24V XLR 6PIN	50
LL43 420	Splitter 6xIN XLR 6PIN serial DC4V/ 1xOUT DC24V XLR 6PIN	70
LL44 500	XLR 6PIN cable	18
LL41 510	LL LED cable (1x0,75mm <sup>2</sup> + 4x0,25mm <sup>2</sup> ) light grey or black	3
LL41 520	LL LED cable (6x0,5mm <sup>2</sup> ) light grey or black	4
LL41 530	LL LED cable (1x0,75mm <sup>2</sup> + 5x0,25mm <sup>2</sup> ) light grey or black	3
LL41 540	LL LED cable (3x1,0mm <sup>2</sup> ) light grey or black	3

### Optic optional lens

Code	Product name	Price
LL PRO LED Z-Power 35 mm 10°	- must be specified by the order, standard is 25°	on request
LL PRO LED Z-Power 35 mm 40°	- must be specified by the order, standard is 25°	on request
LL PRO LED Z-Power 25 mm 10°	- must be specified by the order, standard is 25°	on request
LL PRO LED Z-Power 25 mm 40°	- must be specified by the order, standard is 25°	on request
LL PRO LED Z-Power 25 mm Oval 90x15°	- must be specified by the order, standard is 25°	on request
LL PRO LED Z-Power 35 mm triple 10°	- must be specified by the order, standard is 25°	on request
LL PRO LED Z-Power 35 mm triple 40°	- must be specified by the order, standard is 25°	on request

### LL LED RGB DRIVER

Power:

Power Out:

Data connection:

Net weight:

Ambient temp. (Ta):

Installation:

Dimensions:



100-260 VAC, 50-60 Hz

DC 24V PWM, max. 3x1,4A with 6pin XLR

DMX 512 In/Out with RJ45

0,7 kg

+40C° C

surface mounting

260mm x 45mm x 60mm

Code	Product name	Price
LL42 400	LL LED RGB DRIVER	340

### LL PRO LED DRIVER 12

Power:

Connection:

Net weight:

Ambient temp. (Ta):

Control:

Dimensions:



100-260 VAC, 50-60 Hz in/out PowerCon

DMX 512 in/out with XLR 5PIN

12 x OUT 6PIN XLR Connector max. 12,5 A

2,5 kg

-10°C/+40°C

Protocol: USITT DMX512

Operation modes: Stand alone testing

WALL TRUSSING installation BOX

Code	Product name	Price
LL42 500	LL PRO LED DRIVER 12 max. 12,5A	580

Цены с НДС. Приведены в условных единицах.

Оплата производится в гривнах по курсу Нацбанка. 1y.e = 1 €

## LL PRO LED DRIVER 36

Power:  
Connection:

Net weight:  
Ambient temp. (Ta):  
Control:

Dimensions:



100-260 VAC, 50-60 Hz in/out PowerCon  
DMX 512 in/out with XLR 5PIN  
12/36xOUT 6PIN XLR Connector max.12,5/40 A  
3,5 kg  
-10°C/+40°C  
Protocol: USITT DMX512  
Operation modes: Stand alone testing  
19" 2U installation

Code	Product name	Price
LL42 600	LL PRO LED DRIVER 36 max. 40A	1700

## T5 - PROFESSIONAL

### LL PRO NEO RGBW

Input:  
Connection:  
Net weight:  
Dimensions LxWxH:  
IP:  
Ambient temp. (Ta):  
Cooling:  
Materials and finish:



DMX 512 in/out with XLR 5 PIN  
198-264V, 50/60Hz AC in/out PowerCon  
1500/1200mm: RGBW 11,0 /10,0 kg  
1500/1200mm x125mm x95mm without bracket  
IP20  
max. 40° C  
conventional  
Housing: powder painted aluminium in black  
or RAL (on request)

\* USA version: 120V/60Hz

Code	Product name	Length	Lamps	Price
LL05 400	LL PRO NEO TVD 4x80W/35W RGBW	1500 mm	4x T5 80W/35W	880
LL05 420	LL PRO NEO TVD 4x54W/28W RGBW	1200 mm	4x T5 54W/28W	850
LL05 400	LL PRO NEO TVD 4x80W/35W RGBW	1200 mm	*4x T5 54W/28W	850

### Mounting accessories

Code	Product name	Price
LL05 670	Long bracket 1500 for LL PRO NEO 1500	24
LL05 672	Long bracket 1200 for LL PRO NEO 1200	18
LL05 674	Barndoor for PRO NEO 1500	60
LL05 676	Barndoor for PRO NEO 1200	50

### Glasses, filters

Code	Product name	Price
LL05 690	Special diffusion milky white glasses for PRO NEO 1500/4tubes (LL05 400)	20
LL05 692	Special diffusion milky white glasses for PRO NEO 1200/4tubes (LL05 420)	16
LL05 T5-8xx	Special T5 filter for coloured white T5 tube 80W - 10 colours	12
LL05 T5-5xx	Special T5 filter for coloured white T5 tube 54W - 10 colours	10

### Fluorescent lamps

Code	Product name	Price
LL05 81xx	xx wattage T5 Osram tube RED colour	15
LL05 82xx	xx wattage T5 Osram tube GREEN colour	15
LL05 83xx	xx wattage T5 Osram tube BLUE colour	15
LL05 84xx	xx wattage T5/830 Osram tube 3000K warm white colour	8
LL05 85xx	xx wattage T5/840 Osram tube 4000K cool white colour	8
LL05 86xx	xx wattage T5/865 Osram tube 6500K daylight white colour	8

Цены с НДС. Приведены в условных единицах.

Оплата производится в гривнах по курсу Нацбанка. 1y.e = 1 €

**Mounting accessories**

Code	Product name	Price
LL41 700	LL ARENA BARNDOOR 1kW	P.O.A.
LL41 750	LL ARENA BARNDOOR 2kW	P.O.A.
LL41 800	LL ARENA DRIVER 230V, IP20/IP65 (on request)	P.O.A.
LL41 830	LL ARENA DRIVER 24V, IP20/IP65 (on request)	P.O.A.
LL41 850	ADAPTER for fixing of barndoor on luminaire	P.O.A.

Цены с НДС. Приведены в условных единицах.

Оплата производится в гривнах по курсу Нацбанка. 1y.e = 1 €